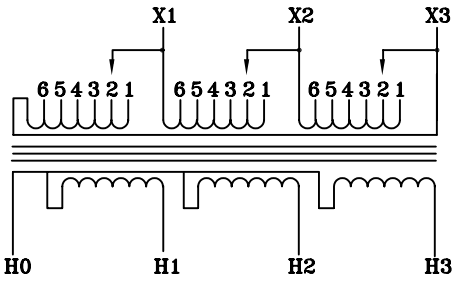
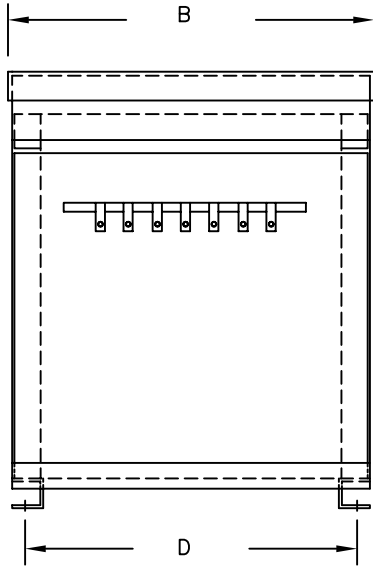


**NOTES:**

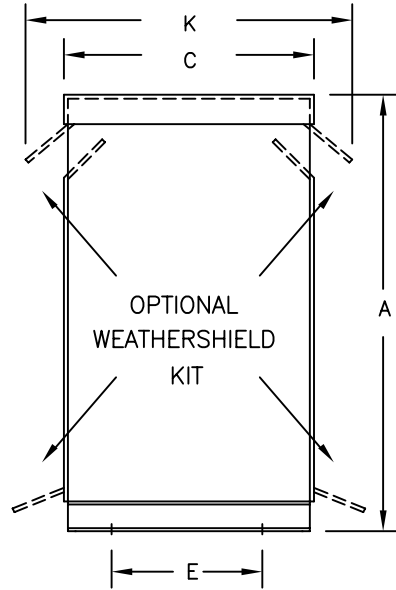
1. ALL UNITS ARE DESIGNED IN ACCORDANCE WITH INDUSTRY STANDARDS.
2. TRANSFORMERS ARE DRY-TYPE, CLASS AA, VENTILATED NEMA 2 ENCLOSED FOR INDOOR USE.
3. TRANSFORMERS ARE FLOOR MOUNTED.
4. AVAILABLE ACCESSORIES FOR THIS UNIT:  
A) OUTDOOR WEATHERSHIELD KIT  
B) WALL MOUNTING BRACKETS
5. TRANSFORMERS ARE CONSTRUCTED BASED UPON A 40°C AMBIENT ENVIRONMENT.
6. MAINTAIN 1" CLEARANCE FROM ALL LIVE PARTS.
7. PAINT COLOR IS ANSI #61.



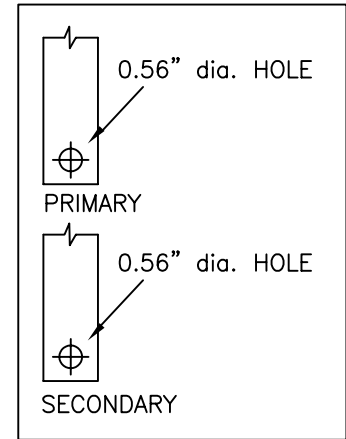
TYPICAL WIRING DIAGRAM



FRONT VIEW



SIDE VIEW



TERMINAL DETAILS

**APPROXIMATE DIMENSIONS ( INCHES )**

| KVA  | A     | B     | C     | D     | E     | F    | G    | H    | J    | K     | L    | BOX     | lbs. | WEATHER SHIELD | LUG KIT |
|------|-------|-------|-------|-------|-------|------|------|------|------|-------|------|---------|------|----------------|---------|
| 45.0 | 34.00 | 22.38 | 19.88 | 20.75 | 16.50 | ---- | ---- | ---- | ---- | 24.00 | ---- | 3PT-30K | 405  | WS-4           | LUG-1   |

\* ELECTROSTATIC SHIELD GROUNDED TO TRANSFORMER CASE AT FACTORY ( IF APPLICABLE )

DRAWINGS  
 APPROVAL  
 RECORD  
 OTHER

|                        |  |         |            |  |  |
|------------------------|--|---------|------------|--|--|
| PRIMARY VOLTAGE        | 208-240 DELTA  | CUST.   | XXXXXXXXXX |  |  |
| SECONDARY VOLTAGE      | 400Y/231   | JOB     |            |  |  |
| TEMPERATURE RISE IN °C | 150  | CATALOG |            |  |  |
| WINDINGS & TERMINALS   | <input checked="" type="checkbox"/> ALUMINUM <input type="checkbox"/> COPPER | NOTE    | XXXXXXXXXX |  |  |
| FREQUENCY              | 60   | BY      | ENG. LOG.  | 3-PHASE, 600 VOLT CLASS ISOLATION DRY TYPE TRANSFORMER |  |
| TAPS                   | 201, 214, 222, 228, 234, 247, 254  | DATE    |            |  |  |
|                        |  | REV     | MFG. LOG.  | DWG. NO.   |  |
|                        |  | DATE:   | DWG. FILE  | 3PTN716-45K-240  |  |