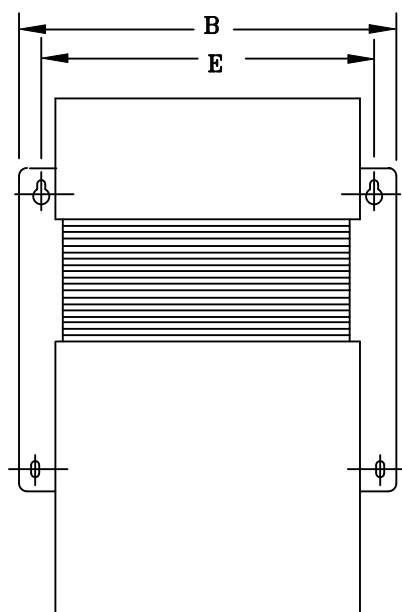
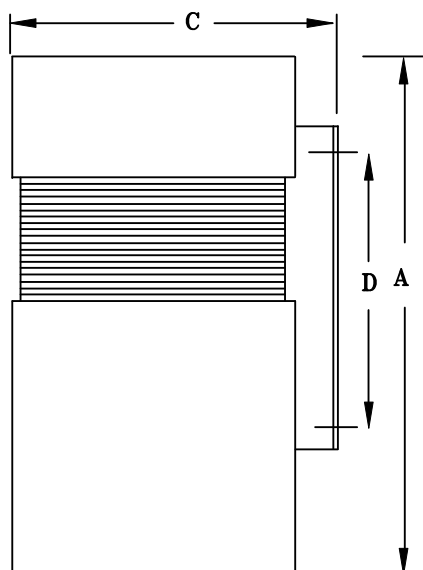




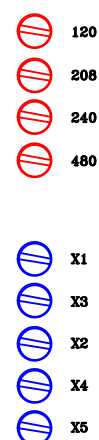
1. ALL UNITS ARE DESIGNED IN ACCORDANCE WITH INDUSTRY STANDARDS.
2. TRANSFORMERS ARE DRY-TYPE, CLASS AA, ENCAPSULATED NEMA 1 ENCLOSED FOR INDOOR USE.
3. TRANSFORMERS ARE WALL / MACHINE MOUNTABLE VIA THE ATTACHED BRACKETS.
4. TRANSFORMERS ARE CONSTRUCTED BASED UPON A 40°C AMBIENT ENVIRONMENT.
5. MAINTAIN 1" CLEARANCE FROM ALL LIVE PARTS.
6. PAINT COLOR IS ANSI #61.



FRONT VIEW




SIDE VIEW



TERMINAL VIEW

KVA	A	B	C	D	E	F	HARDWARE	MTG SLOTS	ENCLOSURE	lbs.	WEATHER SHIELD	TERMINAL TYPE
5.0*	27.00	17.00	14.00	5.25	15.75	----	3/8-16	0.437" x 0.875"	CLT-5K	250	N/A	SCREWS

DRAWINGS
☒ APPROVAL
☐ RECORD
☐ OTHER

INPUT VOLTAGE	120-208-240-480		CUST.	XXXXXXXXXX	
INPUT TOLERANCE	-20%, +10%		JOB		
OUTPUT VOLTAGE	120-208-240		CATALOG		
OUTPUT REGULATION	+/- 3%		NOTE	XXXXXXXXXX	
WINDINGS & TERMINALS	<input type="checkbox"/> ALUMINUM	<input checked="" type="checkbox"/> COPPER	BY	ENG. LOG.	TITLE 1-PHASE, 600 VOLT CLASS CONSTANT VOLTAGE DRY TYPE TRANSFORMER
FREQUENCY IN HERTZ	60		DATE		
			REV	MFG. LOG.	DWG. NO. CLT-5000-GTW
			DATE:	DWG. FILE	