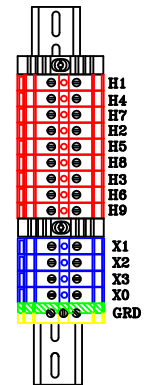
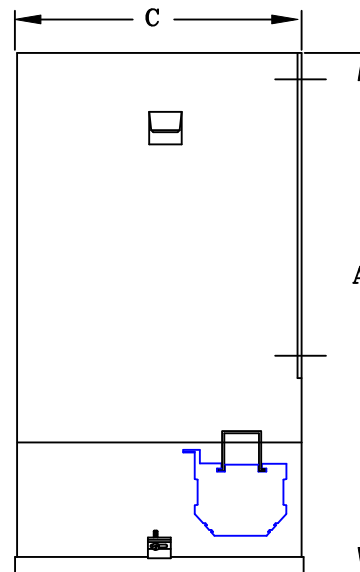
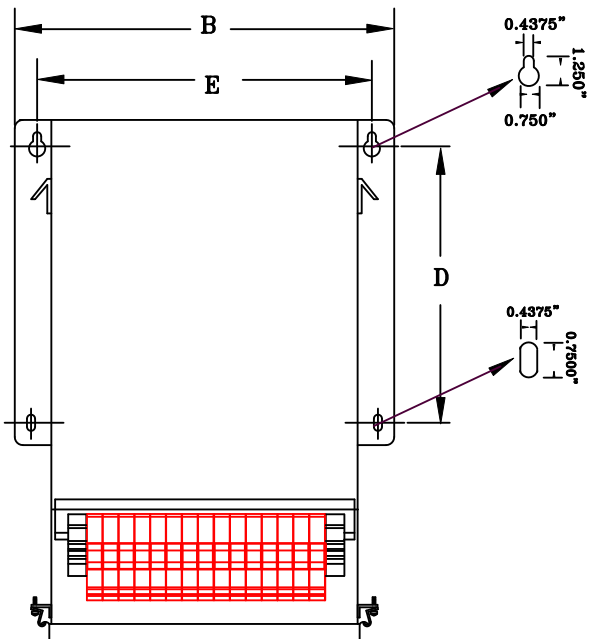


## NOTES:

1. ALL UNITS ARE cUL LISTED & DESIGNED ACCORDANCE WITH INDUSTRY STANDARDS.
2. TRANSFORMERS ARE DRY-TYPE, CLASS AA, ENCAPSULATED NEMA 1 ENCLOSED FOR INDOOR USE.
3. TRANSFORMERS ARE WALL / MACHINE MOUNTABLE VIA THE ATTACHED BRACKETS.
4. TRANSFORMERS ARE CONSTRUCTED BASED UPON A 40°C AMBIENT ENVIRONMENT.
5. MAINTAIN 1" CLEARANCE FROM ALL LIVE PARTS.
6. PAINT COLOR IS RAL# 7042.



FRONT VIEW

SIDE VIEW

TERMINAL VIEW

## APPROXIMATE DIMENSIONS ( INCHES )

KVA	A	B	C	D	E	HARDWARE	MTG SLOTS	ENCLOSURE	lbs.	WEATHER SHIELD	TERMINAL TYPE
SEE BELOW	15.25	12.38	9.00	8.50	11.25	3/8-16	0.437" x 0.750"	N10	155	N/A	TBs

30.0 KVA		24.0 KVA										DRAWINGS <input checked="" type="checkbox"/> APPROVAL <input type="checkbox"/> RECORD <input type="checkbox"/> OTHER	
INPUT VOLTAGE	575Y/332		480Y/277		CUST.		XXXXXXXXXX						
OUTPUT VOLTAGE	480Y/277		400Y/231		JOB								
TEMPERATURE RISE IN °C	115				CATALOG								
WINDINGS & TERMINALS	<input type="checkbox"/> ALUMINUM <input checked="" type="checkbox"/> COPPER				NOTE		XXXXXXXXXX						
FREQUENCY IN HERTZ	60				BY		ENG. LOG.		TITLE				
INPUT TAPS	546, 604				DATE				3-PHASE, 600 VOLT CLASS AUTO DRY TYPE TRANSFORMER				
					REV		MFG. LOG.		DWG. NO.				
					DATE:		DWG. FILE		3EF485FSTA30				