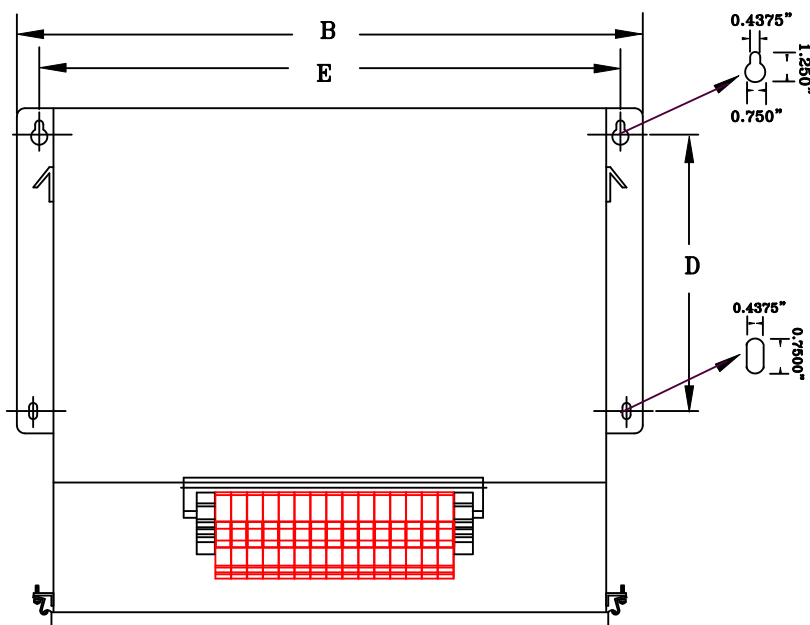


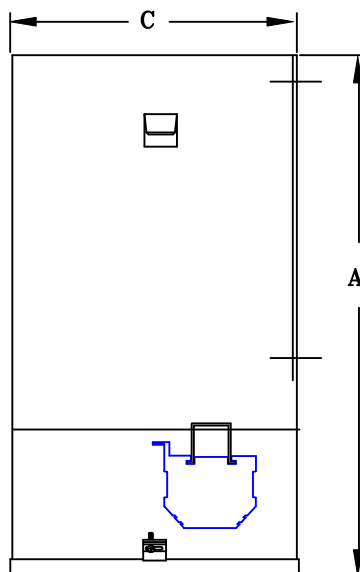
TYPICAL WIRING DIAGRAM

NOTES:

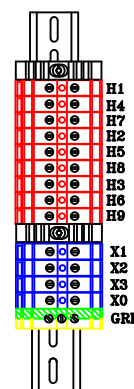
1. ALL UNITS ARE cUL LISTED & DESIGNED ACCORDANCE WITH INDUSTRY STANDARDS.
2. TRANSFORMERS ARE DRY-TYPE, CLASS AA, ENCAPSULATED NEMA 1 ENCLOSED FOR INDOOR USE.
3. TRANSFORMERS ARE WALL / MACHINE MOUNTABLE VIA THE ATTACHED BRACKETS.
4. TRANSFORMERS ARE CONSTRUCTED BASED UPON A 40°C AMBIENT ENVIRONMENT.
5. MAINTAIN 1" CLEARANCE FROM ALL LIVE PARTS.
6. PAINT COLOR IS RAL# 7042.



FRONT VIEW




SIDE VIEW



TERMINAL VIEW

APPROXIMATE DIMENSIONS (INCHES)

KVA	A	B	C	D	E	HARDWARE	MTG SLOTS	ENCLOSURE	lbs.	WEATHER SHIELD	TERMINAL TYPE
SEE BELOW	16.25	19.12	8.50	8.50	17.75	3/8-16	0.437" x 0.750"	3N10	195	N/A	TBs

						DRAWINGS <input checked="" type="checkbox"/> APPROVAL <input type="checkbox"/> RECORD <input type="checkbox"/> OTHER	
	45.0 KVA	36.0 KVA					
INPUT VOLTAGE	575Y/332	480Y/277	CUST.	XXXXXXXX			
OUTPUT VOLTAGE	480Y/277	400Y/231	JOB				
TEMPERATURE RISE IN °C	115		CATALOG				
WINDINGS & TERMINALS	<input type="checkbox"/> ALUMINUM	<input checked="" type="checkbox"/> COPPER	NOTE	XXXXXXXX			
FREQUENCY IN HERTZ	60		BY	ENG. LOG.	TITLE 3—PHASE, 600 VOLT CLASS AUTO DRY TYPE TRANSFORMER		
INPUT TAPS	546, 604		DATE				
			REV	MFG. LOG.	DWG. NO. 3EF485FSTA45		
			DATE:	DWG. FILE			

DRAWINGS
☒ APPROVAL
☐ RECORD
☐ OTHER